

BPA20 trunk battery connector

Brief introduction

- Crimping termination
- Enterprise standard: Q/21E1660

Application

The product is push-pull in-line connector without locking function which is achieved by the locking mechanism between equipments. This series is used in the current transmission between battery box and vehicle side, battery wire and charging side.

Operating environment

The product is applied in vibration environment in EV driving process.

Main technical characteristics

[Mechanical]

- Shell: black painting on aluminum base metal
- Insulator: PT-610, flame retardant rating: UL94-V0
- Contact: copper alloy, gold plating
- Vibration: 10~500Hz
- Endurance: 10000 cycles

[Environmental]

- Operating temperature: -40℃ ~ +80℃
- Salt spray: 96 hours

[Electrical]

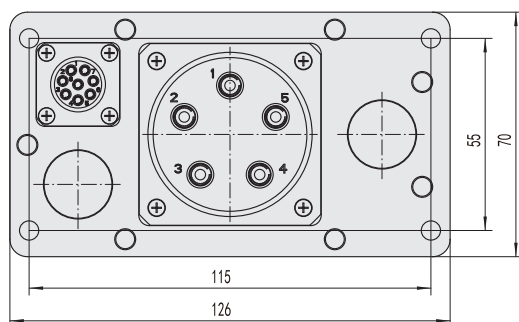
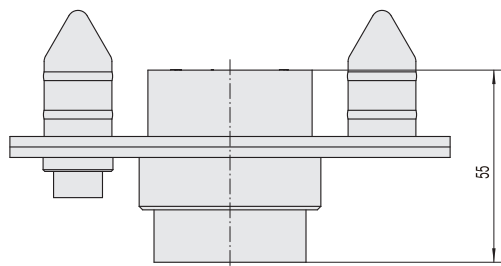
- Rating current: signal 2A, power 80A
- Contact resistance:
Signal and auxiliary $\leq 0.4\text{ m}\Omega$,
power and grounding $\leq 5\text{ m}\Omega$
- Insulation resistance:
 $\geq 100\text{M}\Omega$ (normal temperature, after wiring)
- Withstanding voltage:
between power supplies 3000V AC
Between signal cavities: 400VAC

Ordering information

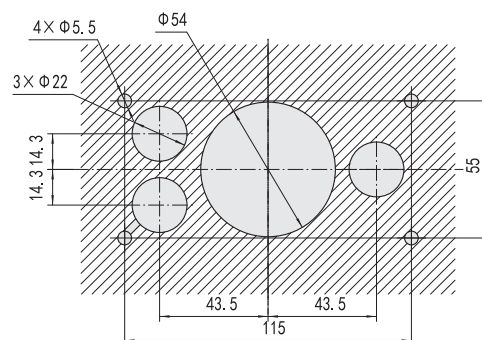
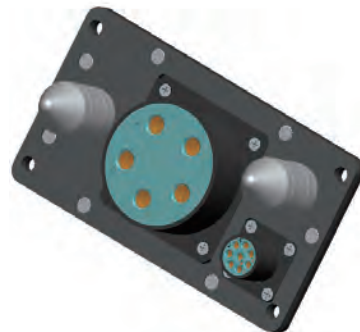
Basic series	BPA	20	-S-	160A	/	750V
Connector type						
Contact type	S-socket	P-pin				
Rating current						
Separator						
Rating voltage						

Outline dimensions

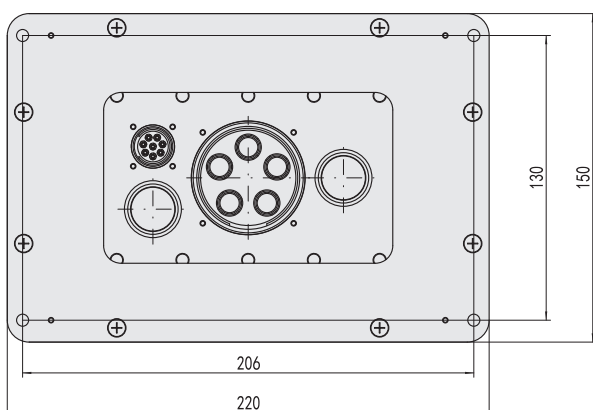
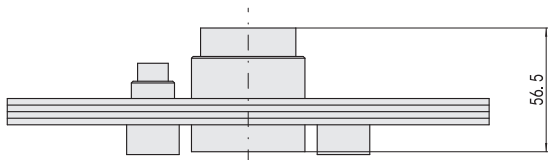
[Plug BPA20-P-160A/750V]



Recommended panel cut-out dimensions



[BPA20-S-160A/750V (receptacle)]



Recommended panel cut-out dimensions

